

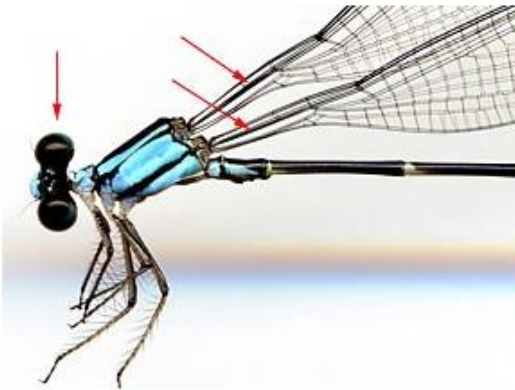
# Clave familias adultos Puerto Rico

Odonata

# 1- Suborden

## Key to the Odonata Families of Monteverde, Costa Rica

Fore and hind wings similar, stalked or narrowing toward base; head barbell shaped, wider than long - ZYGOPTERA



Hindwing broader than fore wing; not stalked; head rounded with large eyes - suborder ANISOPTERA



[Go back](#) | [Restart Key](#)

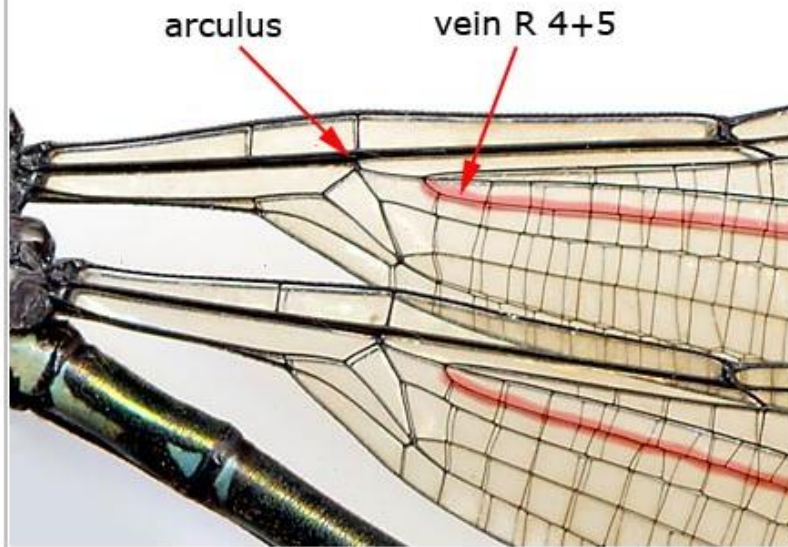
[Pasa a 2](#)

[Pasa a 5](#)

# 2- R 4+5

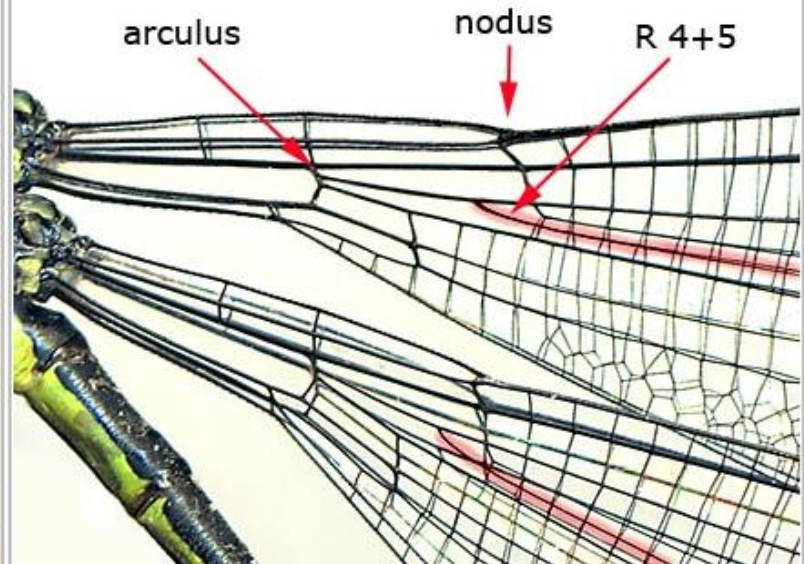
## Key to the Odonata Families of Monteverde, Costa Rica

Vein R 4 + 5 arises close to arculus; wings held apart at rest -  
**LESTIDAE**



LESTIDAE

Vein R 4 + 5 arises close to nodus; wings variable



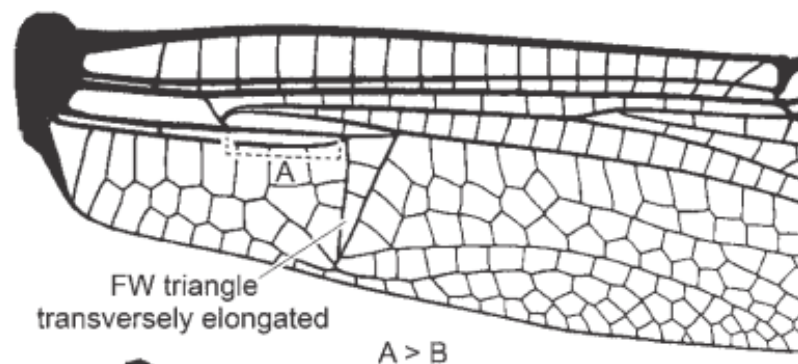
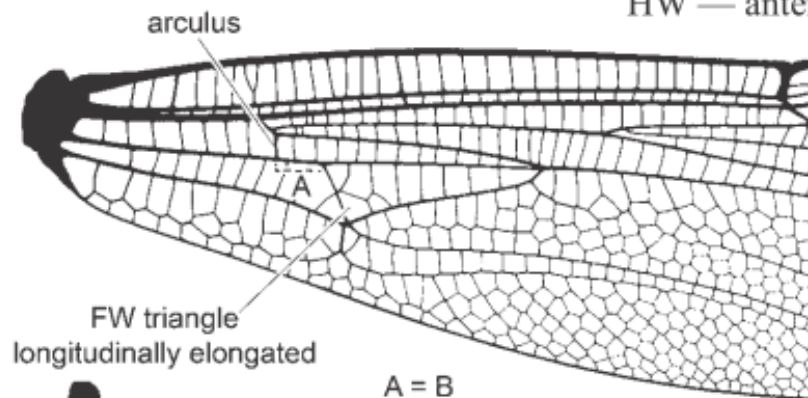
[Go back](#) | [Restart Key](#)

[Lestidae](#)

[Coenagrionidae](#)

# 5- Anisoptera

HW — antenodal portion



32 *Neuraeschna calverti*

33 *Libellula herculea*

[Aeshnidae](#)

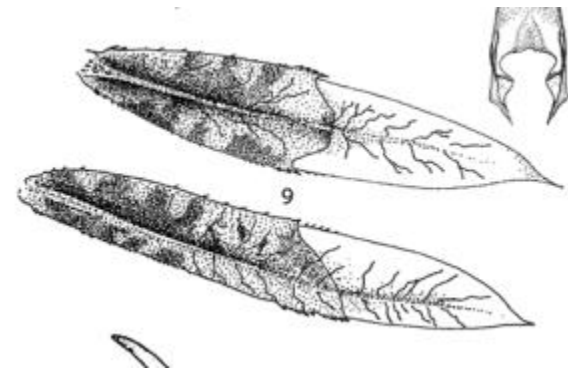
[Libellulidae](#)

# Lestidae



Clave

# Coenagrionidae



Clave

# Coenagrionidae



Clave

# Aeshnidae



© Stephen Cresswell



[Clave](#)



# Libellulidae



Clave